

UWELL



www.myuwell.com

Manufactured by SHENZHEN UWELL TECHNOLOGY CO., LTD.

©2022 By SHENZHEN UWELL TECHNOLOGY CO., LTD., All Rights Reserved.
Designed by UWELL Made in China



Uwelltech



Uwelltech



Uwelltech



Uwelltech

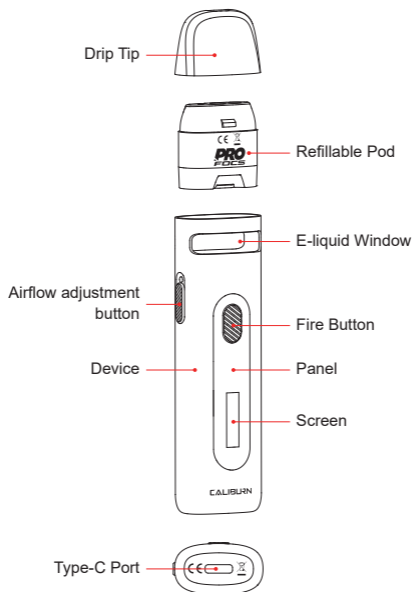


Uwell

CALIBURN

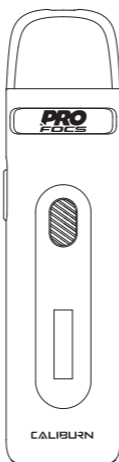
CALIBURN X Pod System
User Manual

Illustration



Quick Guide

1. Insert the pod into the device.
2. Remove the drip tip.
3. Fill e-liquid through the filling port, put the cap on the refillable pod, sit for 10 minutes.
4. Press the fire button 5 times within 2 seconds to turn on, draw or press the button to vape.



Intelligent firing
channel detection



Button lock function



Large battery
capacity



Adjustable output

Specifications

- Materials: PCTG、AL6063
- Dimensions: 107.4 mm × 27.5 mm × 15.6 mm
- Net Weight: 46 g
- E-Liquid Capacity: 3 ml
- Output Power: 5 W - 20 W
- Pod Cartridge Specifications:
 - FeCrAl UN2 Meshed-H 0.8 Ω CALIBURN X Refillable Pod
 - FeCrAl UN2 Meshed-H 1.2 Ω CALIBURN X Refillable Pod
 - FeCrAl 1.0 Ω CALIBURN X Refillable Pod (Sold Separately)
- Battery Capacity: 850 mAh

The Packaging Includes

- 1 × CALIBURN X Device
- 1 × UN2 Meshed-H 0.8 Ω CALIBURN X Refillable Pod (Pre-installed)
- 1 × UN2 Meshed-H 1.2 Ω CALIBURN X Refillable Pod (Spare)
- 1 × Type-C Charging Cable
- 1 × User Manual

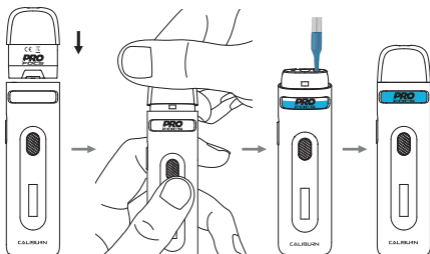
Features

1. Refillable pod with magnets, easy and convenient.
2. An unparalleled vaping experience is brought by proprietary Pro-FOCS flavor testing technology from UWELL.
3. Stable, safe, and reliable performance is ensured by a built-in safety mechanism.
4. Stylish appearance, aluminum alloy one-piece molding. Ergonomic design for a more comfortable grip.
5. Sandblasting oxidation finish with elegant colors.
6. Battery capacity is 850 mAh. E-liquid capacity is 3 ml.
7. Type-C fast charging, charge up to 90% of battery in an hour.
8. Large e-liquid window makes users check the MIN mark conveniently.
9. OLED display, adjustable output, adjustable airflow, easy to operate.
10. Equipped with intelligent firing channel detection.
11. Button lock function to prevent false triggering.

Instructions

1. Pod filling

- Insert the pod into the device.
- Remove the drip tip.
- Fill with e-liquid.
- Put the drip tip cap on.



Attention:

- When filling e-liquid, please fill through the red filling port. Do not fill the e-liquid through the airway in the middle.
- Do not leave the cartridge without the cap on. Put the drip tip cap on securely right after filling to prevent e-liquid leakage.
- After the first e-liquid filling, please let it sit for 10 minutes to avoid coil burning.
- Please refill e-liquid when the e-liquid reaches the MIN level.

2. Airflow adjustment

Slide the side airflow adjustment button to adjust airflow.



3. Replacing pod

- Remove the used pod from the device. Install a new pod.
- After filling the new pod, please let the pod sit for 10 minutes to avoid coil burning.

Device Instructions

1. Turn on/Turn off

Press the fire button 5 times within 2 seconds to turn on/off the device. The display shows "UWELL" when power is on and the display shows "Goodbye" when power is off.

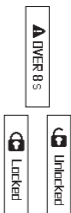


2. Standby

The device will switch to standby mode after 8 seconds without any operation.

3. Vaping time

The device will display the warning "OVER 8S!" and stop output in the case of vaping for over 8 seconds.



4. Lock/Unlock

Press the fire button 2 times in a row to lock or unlock the fire button.

5. Wattage adjustment

Press the fire button 3 times in a row, the power display area flickers, and power adjustment mode starts. Press or hold the fire button, output power



displays from 5W to 20W. After 3 seconds of no operation, the power value is automatically saved. The power display area stops flickering and the power adjustment mode is exited.

The recommended wattage range of the 0.8Ω coil is 13-18W. The recommended wattage range of the 1.0Ω coil is 10-15W. The recommended wattage range of the 1.2Ω coil is 9-13W.

6. Puff counter

The puff counter will only record vapes that last over 1 second. The maximum is 999 puffs. Press the fire button 4 times in a row, the puff record flickers, and the puff clearing mode starts. One press on the fire button will clear the puff to 000P, and another press on the fire button will cancel the clearing operation. Holding the fire button or 3 seconds of no operation will stop flickering and exit clearing puff mode. The record will remain the same as your last operation before the exit.



7. Resistance detection

Resistance detection of the coil would be done automatically. Detection ranges from 0.8Ω to 1.2Ω.

- "No Atomizer" indicates the device is fired without a coil or the coil resistance is beyond detection range.
- "Atomizer short" indicates a short circuit when resistance is too low.



8. Low power protection

"Low Battery" indicates the device is fired with a low battery.



9. Charging

Please use a Type-C charging cable with a 5V/2A adaptor. During charging, the battery icon on the display shows a moving state.

- When the device is off, the display shuts down after the device is fully charged.
- When the device is on, the display shuts down after the device is fully charged.



Attention

1. Please charge with certified high-quality adaptor from a reputable company and a USB cable with the charging current of 5V/2A.
2. The device and adaptor may warm up when charging, keep away from flammable and explosive goods.
3. Please use a dry and soft cloth to clean the device. Keep away from water or any liquids.
4. Please remove the pod cartridge and store it separately when you are on a plane to avoid leakage due to pressure changes.
5. Please do not put the device in your pocket with other hard objects to avoid damages.
6. Please turn off the device when it is not in use.
7. Please charge the device at least once a month.
8. Don't disassemble the device.
9. Avoid high temperature, low temperature and humidity during use or storage to avoid damage to the equipment.
10. The product parameters or pictures in this manual are for illustration purpose only, please refer to the actual product.

Safety Instruction

Please read the following safety instructions carefully before using the product.

1. This product is only available to people who have reached the legal age of smoking. It is strictly forbidden for young children, pregnant women and women during breastfeeding or for patients with heart disease, high blood pressure, diabetes, depression and asthma.
2. Please put the product out of reach of children and pets to avoid injury.
3. When using this product, please keep away from inflammable and explosive materials to avoid injury.
4. The company does not assume any responsibility for any equipment damage or personal injury caused by user misuse.

Warranty Details

Please keep the anti-counterfeit code and proof of purchase after purchasing the product. The warranty period is 180 days from the date of purchase. Our company provides warranty service (Device and atomizer only, exclude coil head and pod cartridge).

Please note that any of the following conditions are not covered by the warranty:

1. Exceeding the warranty period.
2. Damage caused by the use, maintenance, and storage that is not in accordance with the requirements as instructed.
3. Damage caused by unauthorized repair.
4. Damage caused by the usage of non-UWELL components.
5. Damage caused by force majeure.

Verification

1. Visit the UWELL official website www.myuwell.com through a smartphone or PC.
2. Please enter the 16 digits authentic code, and the result will be displayed in a few seconds.
3. Please feel free to contact UWELL via e-mail, phone or website for more help.

Customer Service

We pride ourselves on manufacturing quality products and providing excellent customer service. For any issues, please contact us at service@myuwell.com.

* UWELL reserves the right of final interpretation in the user manual.

* It is hereby stated that the markable area on the product is not enough to mark the CE and WEEE as the standard dimensions.