

CALIBURN TENET

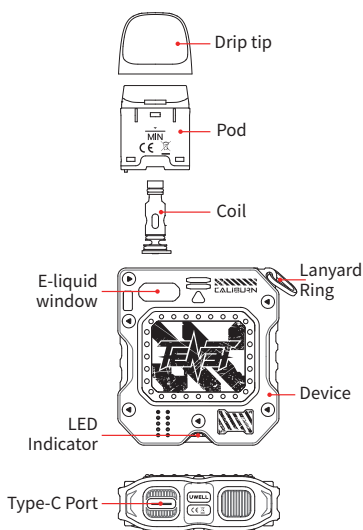
UWELL

User Manual

CALIBURN TENET KOKO POD SYSTEM

©2022 By SHENZHEN UWELL TECHNOLOGY CO., LTD.
All Rights Reserved.

Illustration



Quick Guide

1. Take off the pod, remove the insulating film from the bottom, and put it back.
2. Remove the drip tip and fill e-liquid through the red filling port. Let the cartridge sit for 10 minutes before use.
3. Draw to vape.

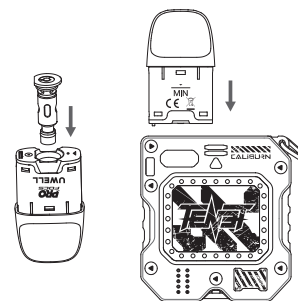
Specifications

- Materials: PA, Aluminum Alloy
- Dimensions: 73.7 mm x 50 mm x 18 mm
- Net Weight: 61.5 g
- E-Liquid Capacity: 2 ml
- Output Power: Maximum 18 W
- Coil Specifications:
 - FeCrAl UN2 Meshed 0.8 Ω CALIBURN G Coil
 - FeCrAl UN2 Meshed 1.2 Ω CALIBURN G2 Coil
 - FeCrAl 1.0 Ω CALIBURN G Coil (Sold separately)
- Battery Capacity: 950 mAh

Instructions

1. Pod filling and coil (or pod) replacement

- a. Take the pod off the new device, remove the insulating film from the bottom of the pod, and put the pod back. Remove the drip tip in the direction shown in the following graphic. Fill the e-liquid into the red filling port, put the drip tip back, and the clicking sound hints at proper installation. Let the pod sit for 10 minutes before use.



Attention:

- a. Please fill through the red filling port. Do not fill the e-liquid into the airway in the middle.
- b. Put the drip tip back as soon as the filling is done and make sure it is properly installed to prevent e-liquid leakage.
- c. After the first e-liquid filling, please let the product sit for 10 minutes to avoid coil burning.
- d. Please make a timely refilling when the e-liquid is under the "MIN" level.
- e. Make sure the e-liquid is under the "MIN" level when replacing the coil to prevent leakage.

2. Vaping

Draw to vape, and the LED indicator remains on while vaping. The device can vape no more than 8 seconds every single time. It will stop output in the case of vaping for over 8 seconds.

3. Battery level indication

During vaping, the indicator light flashes in green to indicate a more than 60% battery level, flashes in blue to indicate a 30%~60% battery level, and flashes in red to indicate a less than 30% battery level. The light flashes 10 times in red and the motor vibrates 3 times to indicate a low power, and the device will stop output.

4. Charging

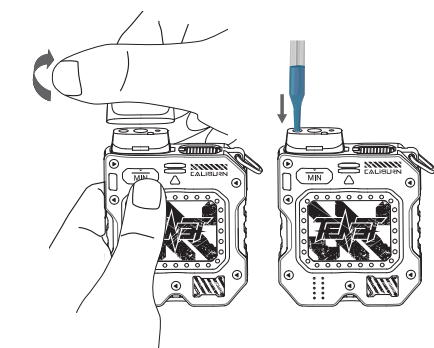
The indicator lights up and the motor vibrates twice when connecting the Type-C cable properly. A red light indicates low battery power, a blue light indicates medium battery power, and a green light indicates sufficient battery power. The green light stays on and the motor vibrates once when the charging is done. The motor vibrates once when disconnecting the Type-C cable.

5. Protection and Indication

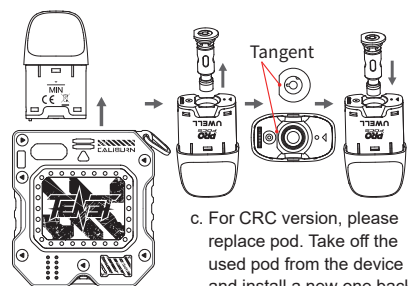
- a. Short-circuit protection: When a short-circuit occurs, it will blink 3 times in red and send 4 waves of vibration, and the device will stop outputting.
- b. Low-voltage protection: If the battery level is below the safety level, it blinks 10 times in red and sends 3 waves of vibration to signal an output stop.
- c. Overtime protection: If vaping lasts more than 8 seconds, it will blink 5 times in green and send 2 waves of vibration to signal output has stopped.
- d. Open circuit indication: If the pod is not connected or poorly connected, the device will signal this by blinking in blue 3 times, sending 2 waves of vibration, and stopping output.
- e. By connecting a pod, it will blink 8 times in colors which is also a current battery level indication, and send 1 wave of vibration.
- f. When the pod is removed, it will blink 8 times in colors which is also a current battery level indication.

ATTENTION:

1. Please charge with the certified power adaptor (5V/2A) and USB cable.
2. Please remove the pod from the device and store it separately when you travel by air, for the air pressure change may cause leakage.
3. Avoid high temperature, low temperature, flammables, explosives, water, and humid environment during the use or storage of the product. Please do not keep the product with hard objects to avoid damage. Please charge the device at least once a month.



- b. Take off the pod from the device, remove the used coil from the pod. Align the new coil's tangent with the coil insertion port's, and insert the new coil to the very end of the port of the cartridge (the parallel bottoms hint at proper insertion). Install the pod into the device.



- c. For CRC version, please replace pod. Take off the used pod from the device and install a new one back.