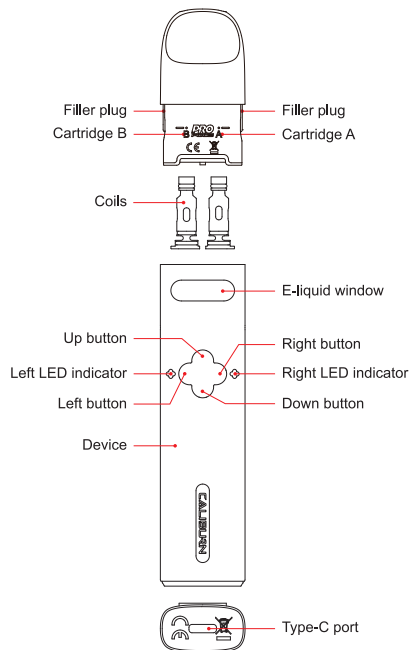


CALIBURN

CALIBURN Explorer Pod System

Illustration



Quick Guide

1. Take the pod off the device, remove the insulating film from the bottom of the pod, and put it back.
2. Open the filler plugs of Cartridge A and B to fill with the e-liquid. Install the pod into the device and let it sit for 10 minutes before use.
3. Press any single button 5 times quickly to turn on the device. Draw to vape.

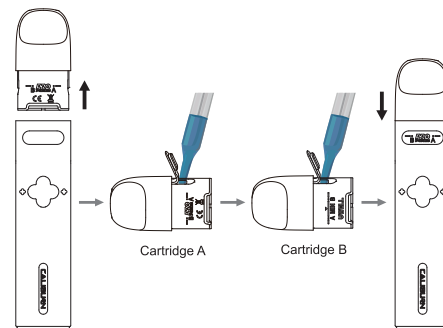
Specifications

- Materials: Aluminium Alloy, PCTG
- Dimensions: 128.1 mm × 26mm × 14.6 mm
- Net Weight: 55 g
- E-liquid Capacity: 4 ml (2 ml for each cartridge)
- Output Power: Maximum 32 W
- Coil Specifications:
 - FeCrAl UN2 Meshed 0.8 Ω CALIBURN G Coil
 - FeCrAl UN2 Meshed 1.2 Ω CALIBURN G2 Coil
- Battery Capacity: 1000 mAh

Instructions

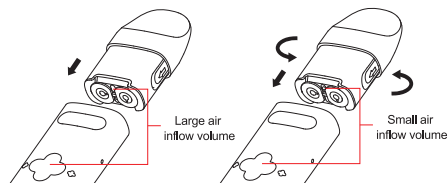
1. Pod filling

- a. Take the pod off the device, and remove the insulating film at the bottom of the pod.
- b. Open the filler plug of Cartridge A to fill, and put the plug back as soon as the refilling is done to prevent leakage. Do the same operation to Cartridge B.
- c. Insert the pod into the device.



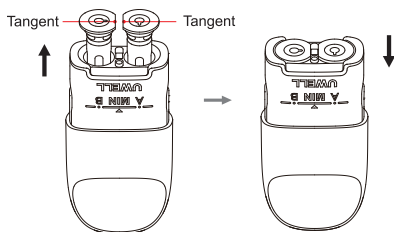
Attention:

- Fill with e-liquid after inserting the nozzle of the bottle into the filling port.
- Let the pod sit for 10 minutes after the first filling to avoid coil burning.
- Please make a timely refilling when the e-liquid is under MIN level.
- Inserting the pod in different directions leads to different airflows and may satisfy the needs of DTL and RDL.



2. Coil replacement

- Take the pod off the device and remove the used coils. Please make sure the e-liquid is under MIN level when you remove the coil.
- Insert the new coil in the direction shown in the graphic, and push the coil all the way in to make it properly installed.



- 3 -

3. Turn on/off

Press any single button 5 times quickly to turn on/off the device. Two indicator lights flash in green/red 3 times and the motor vibrates as the hint of power on/off.

4. Vaping

Press the four-leaf clover shaped button to choose a working mode. The corresponding LED indicators will stay lit according to the chosen working mode while vaping.

- Press the Left Button, and the left coil will work.
- Press the Right Button, and the right coil will work.
- Press the Up Button, and the two coils will work together.
- Press the Down Button, and the two coils will work in alternation mode.

5. Battery level indication

During vaping, the green light indicates the battery level is over 60%, the blue light indicates the battery level is 30%-60%, and the red light indicates the battery level is under 30%.

6. Charging

Connecting the Type-C cable to the charging port, the indicator lights flash, the motor vibrates once, and the charging starts. The green lights indicate the battery level is over 60%, the blue lights indicate the battery level is 30%-60%, and the red lights indicate the battery level is under 30%. The green lights will stay on when the charging is done.

7. Protection and Indication

- Short-circuit protection: When vaping, the left/right light flashes 3 times in red and the motor vibrates twice to indicate the left/right coil short-circuit, and the device will stop output.

- Low voltage protection: When the device is at low power, two lights flash 10 times in red, the motor vibrates once, and the device will stop output.
- Overtime protection: Two lights flash in green and the motor vibrates 5 times to indicate an over 8-second vaping, and the device will stop output.
- Open-circuit protection: when an open-circuit occurs under a no pod or coil situation, the left/right light flashes 3 times in blue and the motor vibrates twice to indicate the left/right coil disconnection, and the device gives no output during vaping.

ATTENTION:

- Please charge with the certified power adaptor (5V/2A) and USB cable.
- Please remove the pod from the device and store it separately when you travel by air, for the air pressure change may cause leakage.
- Avoid high temperature, low temperature, flammables, explosives, water, and humid environment during the use or storage of the product. Please do not keep the product with hard objects to avoid damage. Please charge the device at least once a month.

UWELL

©2023 By SHENZHEN UWELL TECHNOLOGY CO., LTD.
All Rights Reserved.

- 4 -

- 5 -